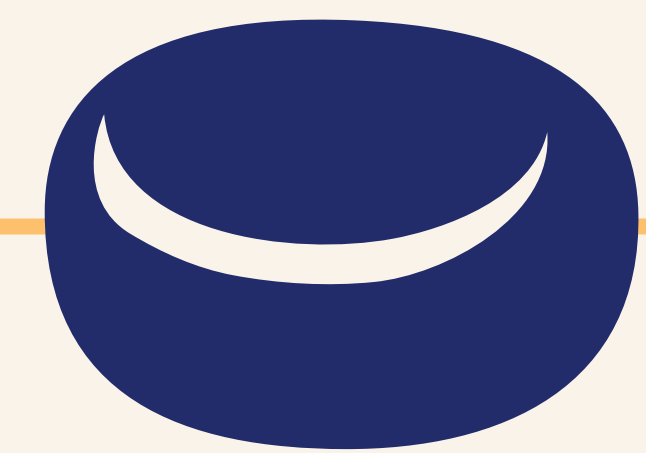


Play SHUFL.

- 1 Two teams, one to four players per team
- 2 Both teams shoot towards the same end, taking it in turns
- 3 Only one team can score per end
- 4 Only count points for pucks past the opposing team's furthest puck
- 5 The team who wins the end, slides first in the next round
- 6 First team to score 15 points wins

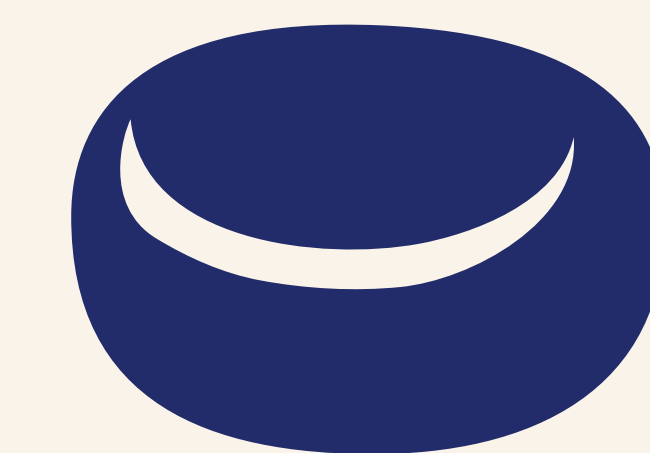
On the line is not past the line

4



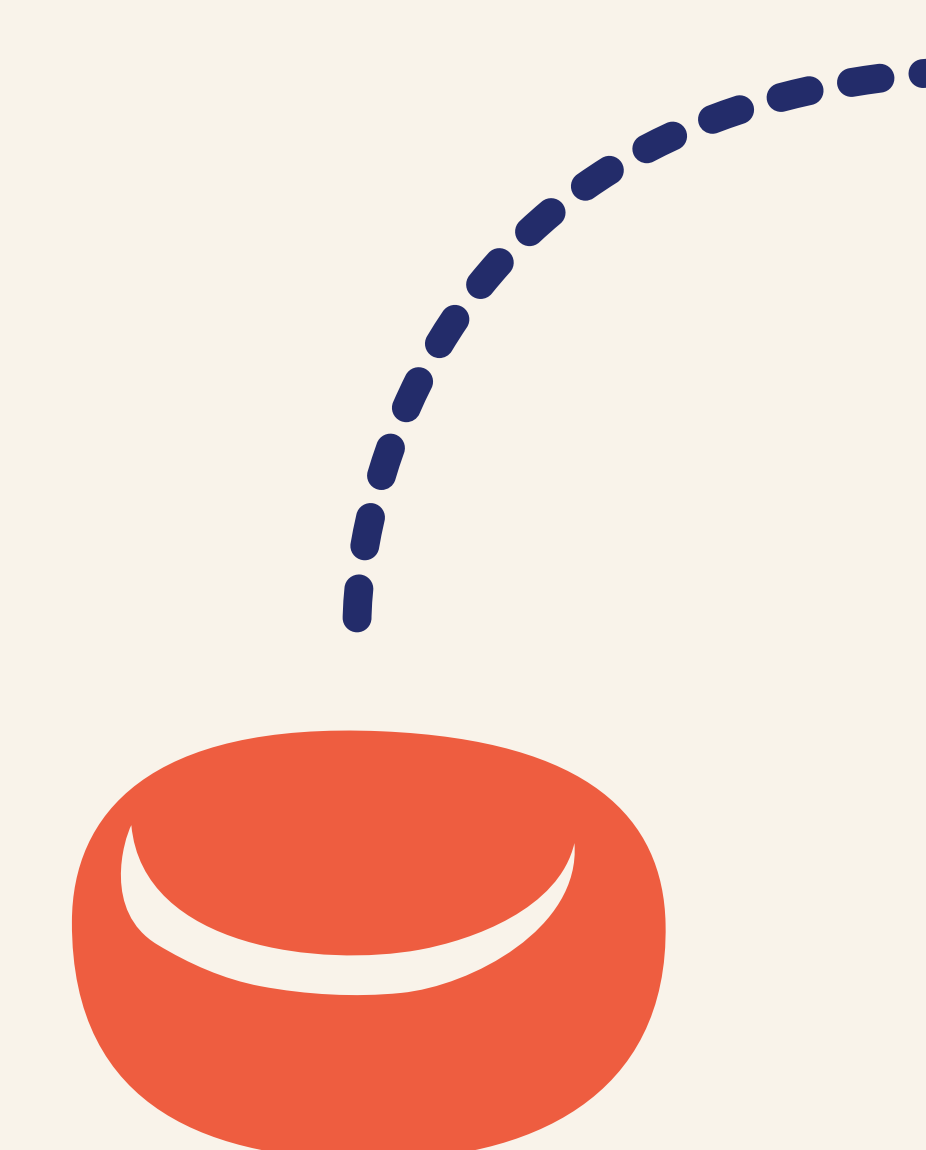
3 POINTS

3



2 POINTS

2



0 POINTS

1

This is the furthest red puck, any blue pucks behind it don't score points



0 POINTS

BLUE: 5

RED: 0