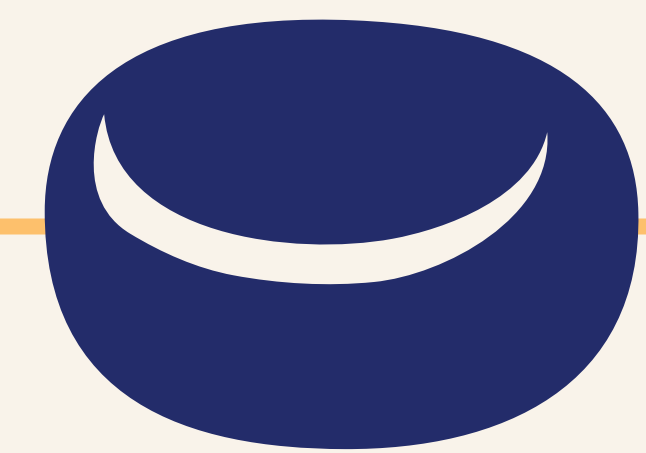


Play SHUFL.

- ❶ Two teams, one to four players per team
- ❷ Both teams shoot towards the same end, taking it in turns
- ❸ Only one team can score per end
- ❹ Only count points for pucks past the opposing team's furthest puck
- ❺ The team who wins the end, slides first in the next round
- ❻ First team to score 15 points wins

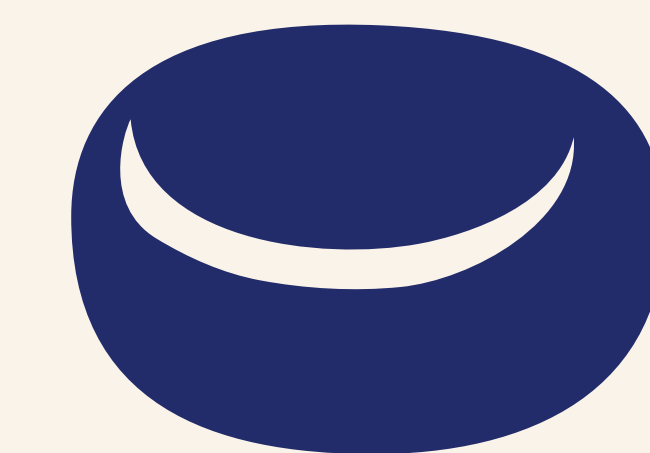
On the line
is not past
the line

4



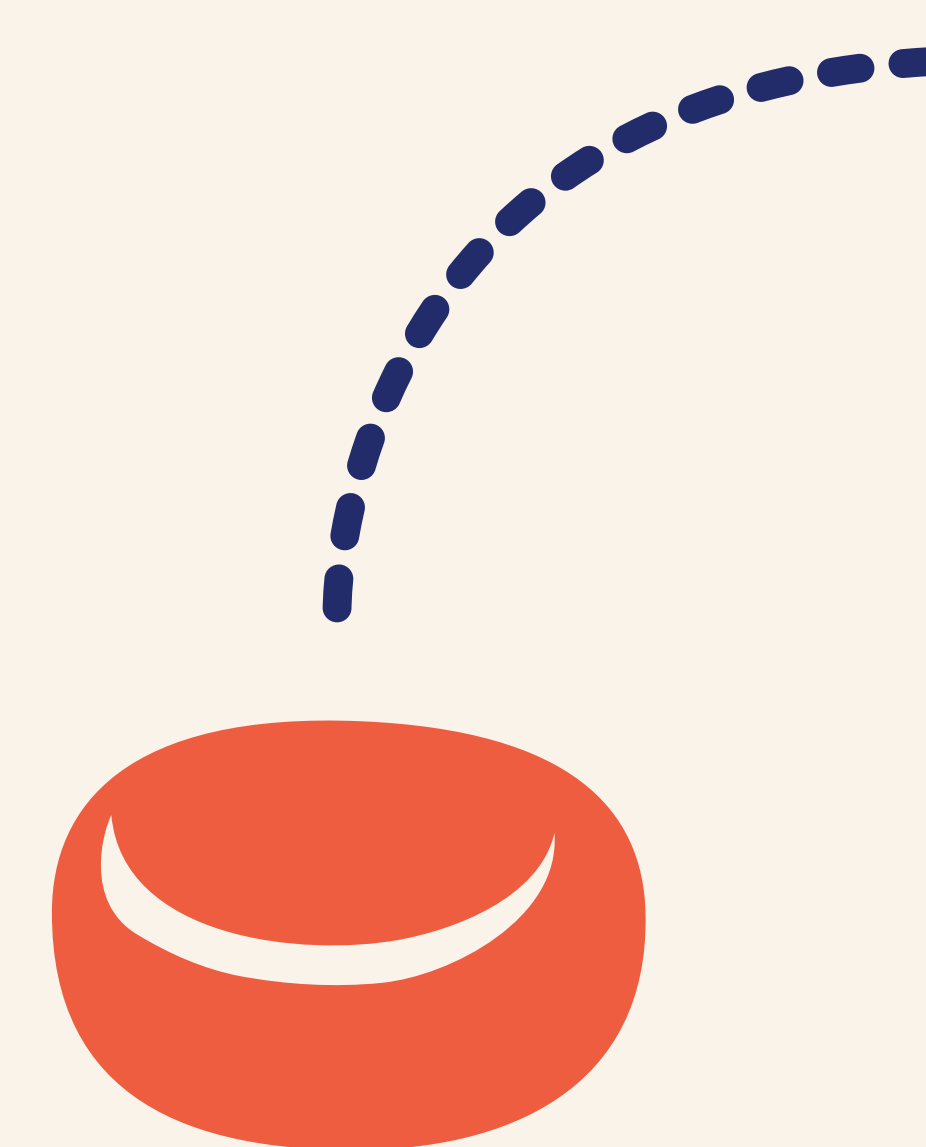
3 POINTS

3



2 POINTS

2



0 POINTS

1

This is the furthest
red puck, any blue
pucks behind it
don't score points



0 POINTS

BLUE: 5

RED: 0